

Info on minor update released August 14, 1996

(Includes update information for June 7 and June 24 releases)

- **The USERPROF.DAT database has been replaced with a new database format that is much more reliable. Included is a program called NEWUPROF.EXE. To upgrade your USERPROF.DAT file, install and start the new server. Then run NEWUPROF.EXE and follow the instructions.**

[Wildcat!](#)

[wcConfig](#)

[wcDraw](#)

[wcFile](#)

[wcMenu](#)

[wcQues](#)

[wcReports](#)

[wcCode](#)

Wildcat!

- The USERPROF.DAT database has been replaced with a new database format that is much more reliable. Included is a program called NEWUPROF.EXE. To upgrade your USERPROF.DAT file, install and start the new server. Then run NEWUPROF.EXE and follow the instructions.
- If a QWK packet is being downloaded in the transfer client, another QWK packet cannot be created right away in the terminal client in order to prevent problems with the user's message pointers.
- Fixed some problems in the server that would occur if there were invalid file volume names present in the configuration.
- The sysop user editor now uses the correct number of days for expiring users when changing a user's security profile.
- wcRepair will now squeeze out unused space in the USERS.DAT and USERCONF.DAT database files (this step was already being performed for FILES.DAT).
- If a DEFAULT user exists, then the sysop user editor will prompt to use the default record as a template when adding a new user.
- The NO-###.BBS display file is now displayed to a user when they are denied access to the specified node (ANSI mode).
- The DEFAULT user is no longer listed when doing a user list.
- The toggle to disable message attachments on a per-conference basis now works correctly.
- The text mode chat system now indicates the owner of a channel with an asterisk beside the channel name in the channel listing.
- wcMail now logs successfully imported messages.
- The FTP server now uses the ftp-data port (20) as the local port when making a connection to a client. This allows proper access from behind a firewall.
- Fixed a bug in the FTP server where it would disconnect a client 10 minutes after connecting. The correct operation is the FTP server will disconnect a client after 10 minutes of idle time.
- wcReg will now detect an existing registration code and won't require you to enter it again.
- wcUUCP will no longer attempt to export private messages in newsgroup conferences.
- Changed the name of wcUUCP to wcMail.
- The default LOGON.WCX function has been enhanced to run any existing LOGON-*.WCX files when a user logs on.
- Fixed FILE_ID.DIZ processing under Windows 95.
- Widened the space available for a carbon copy email address. Also prevented carbon copies in conferences that should not allow them (Newsgroups, mailing lists, and conferences specifically marked to disallow carbon copies).
- If a caller does not have Join access to a conference, but has Read or Write access, then they are no longer allowed to Join the conference anyway.
- Blank lines in questionnaires now display properly in text mode.
- wcRepair now has an option to calibrate the total message count indicator.
- Fixed some display glitches in wcView in the time-online status display.
- wcMail (formerly wcUUCP) now correctly generates RFC822 style dates even when running in a non-North American configured system.
- PRELOG.BBS is now shown before NODEx.BBS as documented in the manual.
- Changes made in the line mode message editor are now saved properly when switching to the full screen editor before saving.
- Line editor now limits the maximum number of lines available, if applicable.
- Users can no longer cancel a batch download and download files without them being counted. Any files that are actually downloaded are now counted.
- If the marked file list is empty, the [R]emove and [C]lear command are no longer shown.
- Fixed some more flow problems dealing with uploading and overwriting files.
- Fixed [C]hange info when viewing file information so the uploader can modify the info even if they do not have Upload access to the associated file area.
- Phone numbers entered in questionnaires are now checked against badphone.lst.
- The size of the HTML input fields for numbers now depends on the maximum value permitted in that field, instead of always defaulting to 9 digits.
- The sysop user editor is no longer case sensitive when performing user security matches.
- The auto generated door menu will now pause when it gets over 24 lines long.
- Fixed ANSI-mode chat end-of-line wrap bug so it works more consistently now.
- Long file names are handled better in the Ansi mode FTP client.
- When using a front end, any time-remaining restrictions are properly passed on to Wconline.
- The automatic packing in the server is now more aggressive in order to pack conferences based on message age when they are not near their maximum number of messages.
- Fixed a problem in the Wconline status display when front end nodes were used.
- The "Multi-User" flag in a door configuration record now works properly.
- Fixed some flow problems when overwriting files whose names and descriptions had been entered before actually

uploading the files.

- GROUPxxx.LST is now supported to send distributed mail. This is only permitted if the user has sysop access to the conference.
- Uploaded files whose name is entered before the actual file transfer will now have their FILE_ID.DIZ files extracted properly.
- Adding a file from the sysop menu and overwriting an existing file will now properly update the long description if you choose to add a new long description.
- The security profile option for maximum time per call is now implemented.
- CONFLSTx.BBS is now supported for a custom display file when joining conferences.
- Locked out users are now written to the activity log if they attempt to log on.
- Some Wordstar-like keystrokes are now accepted in the online full screen editor.
- The file attachment size limit is now honored in QWK packets.
- When downloading a QWK packet, new bulletins will be included in the packet if configured to do so.
- The newsletter (NEWSLTR.BBS) is now only sent with a QWK packet if it has been updated since the user's last call.
- The user last new files date is now properly updated from the Navigator virtual terminal.
- The new files listing no longer shows "Scanning" for areas that are marked to exclude from the new files list.
- If you do not have List access to a file area, the FTP server will no longer let you list the files anyway.
- Dates such as 02/04/01 are now interpreted as being in the 21st century (02/04/2001) unless it is a birthdate.
- In the sysop file editor, Removing a file and answering No will no longer jump to the next record.
- When upgrading a user's security level from the sysop user editor, the user's expiration date will be set if the new security profile has an expiration time period.
- If you connect to a node and don't have access to the node, the timeout period on the "Press [ENTER] to continue" prompt is reduced to 10 seconds.
- The (at)VERSION(at) now returns "5.0".
- The Find command in the sysop file editor will now stay within a matched area.
- Deleting the attachment on a message after downloading the attachment now works properly.
- Changed DOOR.ID to have a system type of "Wildcat! 5.x" instead of "Wildcat! 4.x".
- Users logged on through the Navigator with a virtual terminal are no longer allowed to page the sysop.
- FTP server now handles files marked as copy-before-download.
- Changed the method of saving and restoring toolbar state in wcLocal and wcView to prevent various problems including the inability to run the program.
- The Transfer action types in questionnaires has been removed. This feature existed in previous versions of Wildcat to support long questionnaires, but since Wildcat 5 supports questionnaires of any length this feature is not needed.
- wcQWK now creates a wcqwk.log file.
- When importing messages, wcQWK now uses the date and time of the message, not the import date.
- wcQWK now handles file attachments on both import and export.
- wcQWK now handles TCANned names on both import and export.
- The server will now always pack and renumber conference 0 if the highest number exceeds the renumber threshold. Previously it would only pack conference 0 if there were more than 10% deleted messages.
- If a user drops carrier after uploading files, the files will still be processed.
- The Free Time flag in the file database now works properly.
- When downloading files, only files that are successfully downloaded are removed from the mark list upon completion.
- File ratios are now calculated more accurately.
- Lower case file names are now properly handled when requesting files by name.
- When using browser independent logons, downloads through the virtual terminal client now work properly.
- In wcEvent, fixed "Shutdown System" and "Reboot System" so they work under properly under Windows NT

wcDraw

- Fixed the problem with losing characters when maximizing main window.
- Fixed some problems with recording @-codes correctly when saving.
- Changed "comments.bbs" to "Comment to sysop.bbs" in the display file listing.

wcFile

- wcFile now uppercases all filenames prior to adding or updating them in the database.

wcCode

- Fixed a bug in the editor which caused the text to be deleted when unindenting a block of text.
- Added the keyword NULL to the keyword highlighting list.
- Programs logged in to the server as 'system' are now allowed to write to the wc:\http path and subdirectories.
- Fixed WcCreateFile so that a system login context can open an existing file (createmode = OPEN_EXISTING) for writing.
- The GetUsersOnline function is now properly available from wcCode.
- Fixed a bug in CloseChannel that would flush all channel messages pending for your context, even if those messages were in a channel that was not being closed.
- Fixed a bug in the Mid statement on the left hand side of an expression in certain boundary cases.
- Fixed a hang problem when a module catches err_nocarrier and the user hangs up.
- Fixed WcExistFile so it would correctly recognize files that were open and were not allowed to be shared for read access.

wcMenu

- When reading in *.bbs display files from the menu subdirectory, only the name is used. The security postscript is stripped from the name, so that the different security profiles access the correct display file for that access level.
- Treeview contents will now span multiple pages when printed. Menuitem details will follow on a new page.
- Loop through Menu directory wasn't counting properly, allowing program to gather *.BBS files multiple times.
- Fixed a menu reference problem created when empty space was deleted out of wildcat.mnu file. Copy/Paste routines now check for valid references when called.
- Add Menuitem now checks Goto Menu commands for a valid menu name. If blank, or addressed to a menu which doesn't yet exist, it will put up a dialog box explaining error, and ask user to select a menu which does exist.
- Made sure that Goto menu commands which delete the last reference to a menu only place the menu at the root level of the tree. To delete the menu completely, user must select the menu again (at root level), and select delete.

wcQues

- Fixed problem when editing result items, (for a select action type) . The display was not updating the number sequence until you closed the dialog and reopened.
- Fixed a problem with min/max edit values not being remembered during action editing.
- Fixed a problem with copied result items (action type - selected) getting listed below the default item. This was causing a problem with not being able to edit the copied event afterwards
- Fixed a problem with select action types saving as transfer types. This bug was introduced when we removed the transfer action type.

wcReports

- Added ability to export user-defined fields in all supported formats.
- Fixed a problem with last conference not showing up if there is a large interval between last and next to last conference.
- Fixed a problem with wcReports not deleting the connection context when exiting, causing a beep.
- Printing messages now prints read flag and sent date.
- Viewing message attachments and files now warns if the file is an EXE and allows you to cancel the operation.
- Fixed a problem with deleting users and having it attempt to reload the list resulting in a key not unique in collection error.
- Setting the return receipt flag in message editor now works.
- Added feature in Files/Change to allow user to synchronize file dates.
- Fixed a problem with editing a user and having the last logon and user since dates reversed in the main list.
- Fixed a problem with File Reports not correctly reporting file not on disk and vice-versa..
- Fixed a problem which caused "can't login to server" errors when spawning stats from reports.
- Password has been removed from user export field list because server won't return it anyway.
- Fixed a problem with Messages being sent without a UserID so Wildcat! can notify the user of a new message. Also wasn't validating the name according to the conference configuration.
- Messages now correctly reflect private and received flags in list, and reflect change made to private status in message editor.
- The server refuses to delete files with a stored path for several reasons, but wcReports now shows a message communicating this when it deletes a file record that has a stored path.
- Fixed a problem with the questionnaire processor ignoring all question types other than text and multi-choice.
- Now correctly shows file flags (offline especially) without faulting.
- Was not seeing all of user defined field names, now correctly returns all values.
- Fixed a problem with adding time to database with date when adding files.
- File area column was widened on file list.
- Listviews now display dates in year/month/day format so they sort correctly.
- Match filter on messages with subsequent move copy or delete now works.
- All protocols work now in match filters.
- Entering a message no longer causes an "invalid read date" error.
- Fixed a problem with wcreports incorrectly defaulting to current.st in the presence of a valid config file.
- Files extracted when viewing a file or message attachment are now deleted when done viewing (exception: self-extracting files may create files in other directories and thus not all files may be deleted).
- Fixed some problems with matching users on last call, first call, user since, all history fields.
- wcReports no longer tries to copy a message attachment that does not exist.
- Fixed a problem with description parsing routine which would fail on finding no spaces.
- Fixed a problem that caused a RTE 5 when exporting a list of all files.
- Fixed the date validation routine to honor international format for dates.
- Fixed a problem with adding and subtracting dates in matching users with age.
- Fixed a problem with number overflow in numeric fields in user pages.
- Fixed a problem with matching on multiple security/access profiles.
- Fixed a problem with file listing to screen repeating at end of list.

wcConfig

- Fixed flicker problem in main window.
- Fixed the problem in file area edit of bringing up the "check directory exists" dialog when clicking on the access tab. Now the paths are checked only if the OK button is clicked.
- Create All and Ignore All buttons in the path dialog are now disabled if only looking for one path. Buttons are enabled if program is looking for more than one path.
- Fixed problem with saving conference group if the character " : " is part of the conference group name resulting in not being able to create the file on hard drive.
- Fixed problem with memory only being allocated for a max of 1000 security files rather than allocating based on actual number.
- Added new POP3 call type to node configuration screen in preparation for SMTP/POP3 support.
- Only one copy of wcConfig can be running at a time now.
- Can no longer delete conference 0.
- Fixed problem with not saving paths that did not start with a letter.
- Can no longer define a hub conference that is already in use by another conference within the same QWK Network.

Information on minor update released August 27, 1996

- The USERPROF.DAT database has been replaced as of the August 14 release with a new database format that is much more reliable. Included is a program called NEWUPROF.EXE. To upgrade your USERPROF.DAT file, install and start the new server. Then run NEWUPROF.EXE and follow the instructions.

[Updating your prompt file with ADDPROMPTS.EXE](#)

[POP3](#)

[CGI](#)

[wcSMTP](#) (requires Internet Connectivity Pack)

Changes and fixes

[Wildcat!](#)

[wcConfig](#)

[wcDraw](#)

[wcFile](#)

[wcQues](#)

[wcReport](#)

Wildcat!

08/15/96 - The presence of a default user (named DEFAULT) no longer causes the online user listing to appear to hang.

08/14/96 - The sysop node management screen now deals with hitting [N]ext or [P]rev at the end or beginning of the list of nodes.

08/14/96 - The sysop node management screen now reports the actual number of nodes available, instead of 250.

08/14/96 - Pressing Enter or an invalid protocol selection when asked for a download protocol will no longer count the download as successful.

08/14/96 - The user's call counter is no longer incremented if they fail a login birthdate or phone number check. This means that they can no longer call back right away and bypass the birthdate or phone number check. (This does not affect password security, which is not based on the call counter.)

08/14/96 - Blank user names entered by typing in only punctuation when asked for a user name are no longer allowed.

08/14/96 - Fixed a problem in the server that would cause it to slow down if wcMail was running and there were a lot of newsgroup conferences that did not have any mail.

08/14/96 - wcMail will now immediately deliver mail addressed to your own domain, without going through an external provider.

08/13/96 - There is now a per-user switch that disables MIME message decoding. If a user is using the POP3 server with a MIME-capable mail reader, the user will want to preserve MIME encoded messages.

08/12/96 - An invalid door path is now reported properly when trying to run a door.

08/09/96 - New users calling with the Navigator now have their expire date set properly.

08/09/96 - The Delphi 32 WCSMW.PAS file has some syntax errors corrected.

08/09/96 - In wcLocal, the download directory dialog now comes up with the correct default path under Windows 95.

08/08/96 - When listing files with the full-screen file lister, a file area that is empty is now shown as empty rather than showing the first file of the next available area.

08/08/96 - Fixed a glitch in the full screen message editor that could cause lines of text to disappear from the screen if the backspace key was pressed one character past the end of the current line.

08/08/96 - The extension part of file names is now indexed in the file database.

08/08/96 - The Ansi file area lister now turns Doorway mode on and off automatically like the full screen editor.

08/08/96 - Fixed LOGONUTL.WCX so it won't throw invalid file number errors.

08/08/96 - The Space wcCode function is now more tolerant of input parameters that are out of range (ie. negative).

08/08/96 - Using the @BELL@ display macro no longer increments the internal column counter reported by the wcCode POS function.

wcConfig

08/16/96 - Created Computer Configuration routines for the support of CGI.

wcDraw

08/19/96 - Fix problem with "Ctrl Y" deleting line uder current line rather than the current line.

wcFile

08/19/96 - Fixed a bug which could cause the DIZ/SDI processing routines to GPF under certain conditions.

08/19/96 - wcFile now forces a reload of the source drive list everytime the list is shown.

08/19/96 - Fixed a bug which could sometimes cause a CD-ROM to not be found when processing offline file requests.

08/19/96 - Fixed a bug in wcFile which caused the Wildcat! Server to throw out duplicate file request messages. wcFile now adds a time and date stamp to each message text, creating a unique message for each request.

08/19/96 - Fixed a bug in the dropfile processing which could cause garbage to be put into a new filearea record.

08/19/96 - Added code to wcFile's dropfile processing routines to handle invalid dropfile's better. wcFile now does more extensive checking of the data in a dropfile.

wcQues

08/19/96 - Added " PreserveMimeMessages" to available destination fields. To match server update.

wcReport

08/09/96 - Added feature to allow changing of file area in file change function, also to command files.

Updating your prompt file with ADDPROMPTS.EXE

Additional prompts were added to the ANSI interface. You will need to update your prompt file manually. We have provided a utility program, ADDPROMPTS.EXE, to help you do this.

To update your prompts:

- Shut down wcSERVER and any client programs that may be running.
- Use Explorer (Windows 95, Windows NT 4.0) or File Manager (Windows NT 3.x) to change to your WILDCAT home directory (normally C:\WC5).
- Double-click the ADDPROMPTS.EXE icon.

When the operation is complete, ADDPROMPTS will display a message indicating how many prompts were updated.

CGI in Wildcat

The Wildcat web server now supports CGI programs. A **Computers** icon has been added to wcConfig to define CGI paths and other computer-specific items.

What is CGI?

The acronym CGI stands for "Common Gateway Interface". It allows your callers to run external programs from your HTML pages.

Typically, a CGI program takes input from a caller, does something with it, then sends its output back to the caller. Some examples include:

- A counter that shows how many people have visited this page
- A query engine that searches a database for user-entered keywords, and returns the results as dynamically-generated HTML.
- A "guest book" page that allows callers to read comments left by other users, and leave comments of their own.
- An on-line order entry system.

Creating CGI programs

Any programming language that can produce executable programs (.EXE files), for instance C++, Delphi or Visual Basic, can be used to create CGI programs.

A lengthy discussion of CGI programming is beyond the scope of this document. If you are new to the subject of web page development, we encourage you to make use of the many excellent books and online tutorials that are now available on the subject of web page creation, HTML programming and CGI.

Security

Because CGI programs are executed from an URL (Uniform Resource Locator), users could conceivably type an URL in their browser, specifying an executable program with command line arguments. **This has the potential to compromise the security of your system!**

To protect yourself from security breaches:

- Visit <http://www-genome.wi.mit.edu/WWW/faqs/www-security-faq.html> and follow the links to find out more about security issues on the World Wide Web.
- Do NOT point the CGI-path at your WILDCAT home directory (normally C:\WC5) or at any other path within your Wildcat! directory structure, particularly one that contains executable files *other* than the ones you want your callers to launch from your HTML pages. The safest location is a path completely outside your Wildcat! tree, for instance C:\CGI.

For security reasons, Wildcat! does not execute "scripts" that are processed through CGI interpreters such as PERL.EXE, BASH.EXE, CSH.EXE, KSH.EXE, JAVA.EXE, PYTHON.EXE, SH.EXE, TCLSH.EXE, TCSH.EXE, VCL.EXE, or WISH.EXE.

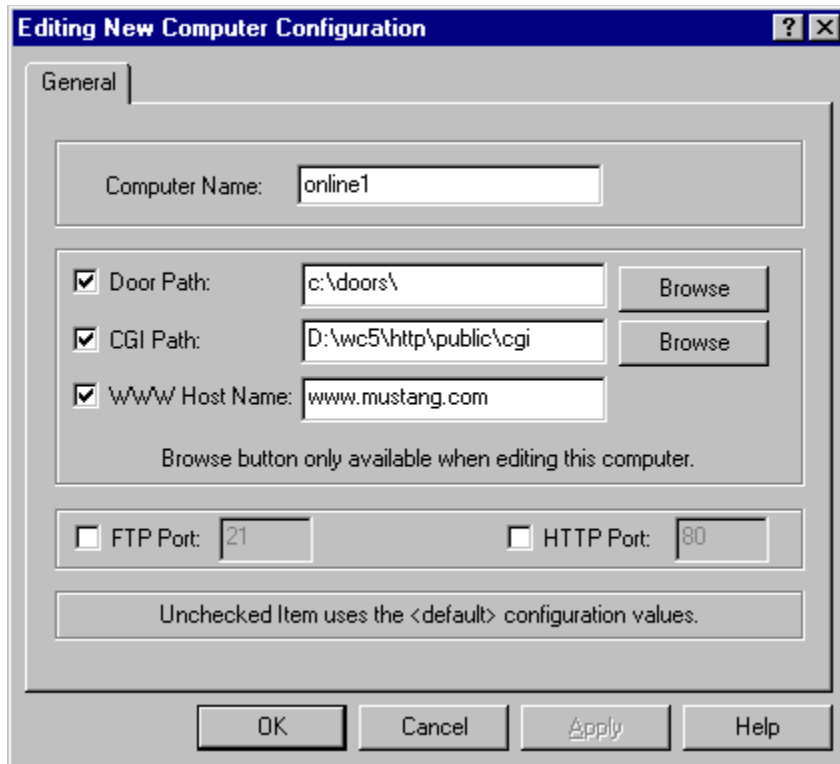
Configuration

To configure CGI for your system, follow these steps:

Define a CGI path

- Start wcConfig and open the **Computers** icon.
- Use the **Add** button to add a computer to the list. The default settings will apply to all computers you do *not* explicitly define here.
- Select a CGI path. Wildcat! uses this path to locate the executable program specified in your HTML link.

Use the **Browse** button to select a directory, or type the path directly in the path field. Your settings should look something like the screen below: You can set a default CGI path to be used for all computers, and you can override the CGI path on any particular computer.



Copy your CGI programs to your CGI path.

The programs will not be executed if they are outside this path, for security reasons.

Add your CGI programs to your HTML pages

A sample CGI program is included: CGITEST.EXE. This is a simple CGI diagnostic program that displays its command line, posted data, and current environment. To try it, copy CGITEST.EXE to your CGI path (**do not run it from your WILDCAT home directory**) and add the following sample link to one of your HTML pages:.

```
<a href="/public/cgi/cgitest.exe?whatever">Run CGITest</a>
```

Note that the the **URL** for CGI programs is always */cgi/programname.exe* or */public/cgi/programname.exe*, but the actual CGI **path** is configured in the **Computers** icon in *wcConfig*..

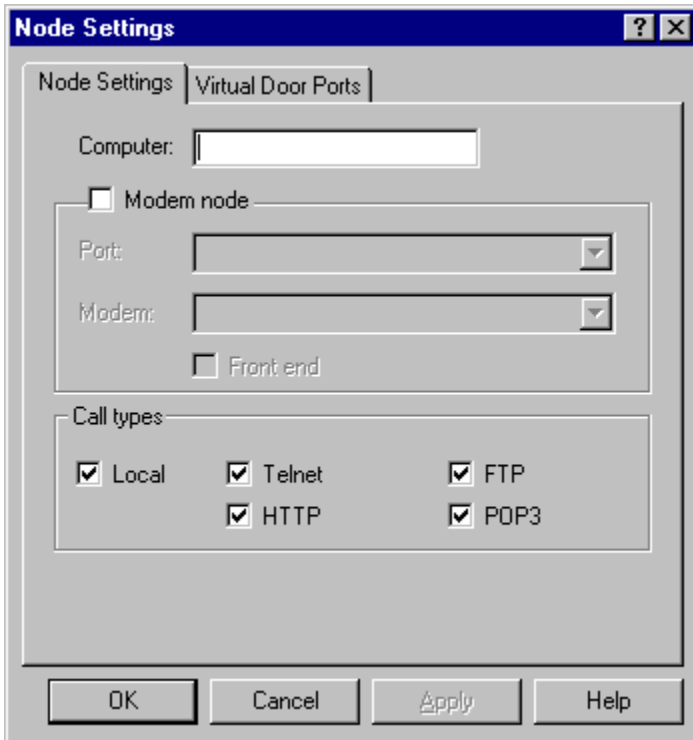
POP3 (Post Office Protocol)

POP3 is a widely adopted mail-retrieval protocol used over TCP/IP. POP3 allows callers with an internet connection to read mail in Conference 0 of your system, using a variety of easily-obtained internet mail readers. For security reasons, POP3 requires users to logon to the server to retrieve mail. Users will be prompted for their Wildcat! user logon name and password. POP3 is one-way, in that it only sends incoming mail to the users internet mail reader. The reader uses an SMTP server to send outgoing mail.

Configuring POP3 on your Wildcat! Server

To configure Wildcat! for POP3 connections:

- Verify that wcServer is running, then start wcConfig.
- Open the **Node Settings** icon.
- Select one or more nodes that are not being used for modem lines, and edit each node. Each node can support one POP3 connection at a time.
- Under **Call types**, turn on POP3. You can select more than one type of connection for a single node: Local, Telnet, HTTP, FTP and POP3. The following screen shows a correctly configured node.



POP3 E-mail Clients

Some popular POP3 compatible mail clients include:

- Netscape (visit <http://home.netscape.com/comprod/mirror/index.html> to download). Use the **Windows/Netscape mail** command in Netscape to pop up the mail reader.
- Eudora
- Pegasus Mail

These applications are freeware or shareware, and most are available for download from *Mustang Online!*

Visit <http://indy2.imt-mrs.fr/winter/cmail.html> for a more extensive collection of mail clients, complete with reviewer's comments!

Configuring mail applications to use POP3

The following settings are from Netscape's Mail and News Preferences configuration. Other mail readers will have similar configuration settings. The following examples will send and retrieve mail for users with mailboxes at Mustang Online.

Outgoing Mail (SMTP) Server	mail.mustang.com
Incoming Mail (POP) Server	online.mustang.com
Pop User Name	your.name

When you use the "get mail" command (or equivalent) in your mail reader, you will be prompted to enter your user name and password. Your user name is the "internet" style name, minus the domain name. For instance SCOTT HUNTER's user name in

his POP3 mail client is scott.hunter. Your password must be entered in all upper case.

wcSMTP (Simple Mail Transfer Protocol)

What is wcSMTP?

SMTP stands for "Simple Mail Transfer Protocol", and has become the most widely used transport for transferring mail from one host to another. SMTP sends mail point-to-point rather than through a network hierarchy, allowing for fast delivery. Mail can also be routed for a number of systems to a single mail server, or routed using other mail protocols such as POP3 and UUCP to individual recipient machines or other mail servers that spool mail to other networks.

Configuring Wildcat! to use SMTP

Unlike UUCP, SMTP requires a full-time connection to the Internet with a static IP address in order to receive and send mail from other systems. If you do not have a full-time connection, you will not be able to run wcSMTP.

To configure Wildcat! for SMTP mail:

Without a currently installed UUCP host:

- Verify that wcServer is running, then start wcConfig and open the SMTP icon
- Type your domain name (for instance mustang.com) in the domain name field, then click **OK** to save your changes and return to the wcConfig control panel.
- Start wcSMTP server.
- Start wcMAIL server.

With a currently installed UUCP host:

- Verify that wcServer is running, then start wcConfig and open the Networking icon.
- Verify the correct path for your spool directory, then click **OK** to save your changes and return to the wcConfig control panel.
- Start wcSMTP server.
- Start wcMAIL server.

wcSMTP uses the same spool directories that are used by wcMAIL, but does not use the Alternate spool path (commonly used for incoming Satellite news). If you wish to change the spool directory for any reason, click the **Networking** icon in wcConfig to edit the primary host spool directory. Translations are all handled within wcMail and are therefore configurable from within the 'Networking' applet in wcConfig.

Both wcMAIL and wcSMTP must be running in order to transport SMTP mail — wcMAIL does the job of importing and exporting messages from Wildcat!, while wcSMTP takes care of processing the mail to and from other mail hosts.

DNS Configuration

DNS configuration may be different from implementation to implementation, therefore discussion will be limited to the basics here.

If you run a DNS at your own site, you'll need to change the 'mail exchange' (mx) record for your domain name to point to the system that will be running the wcSMTP server.

If your DNS services are provided by your ISP, you should contact your ISP and tell them you are implementing an SMTP server on-site and would like to have your 'mx' record stored on their DNS changed to point to your machine running the wcSMTP server.

What about my newsgroups?

SMTP does not transport Usenet newsgroups. It is strictly for Internet Email. An existing UUCP configuration with a provider can be maintained, and allow wcSMTP to transport and receive mail rather than UUCP. Don't forget to contact your ISP and ask them to change the mail record on their DNS to point to the wcSMTP server on the local network, unless the local network has a DNS server already set up, and the domain has already been registered with the Internic.

For example, a system may have used Holonet to transport their email and network using wcUUCP, and decide to implement the new wcSMTP server. In order to do so, they must make the appropriate changes to their DNS server, or to the DNS server they are using at Holonet.

